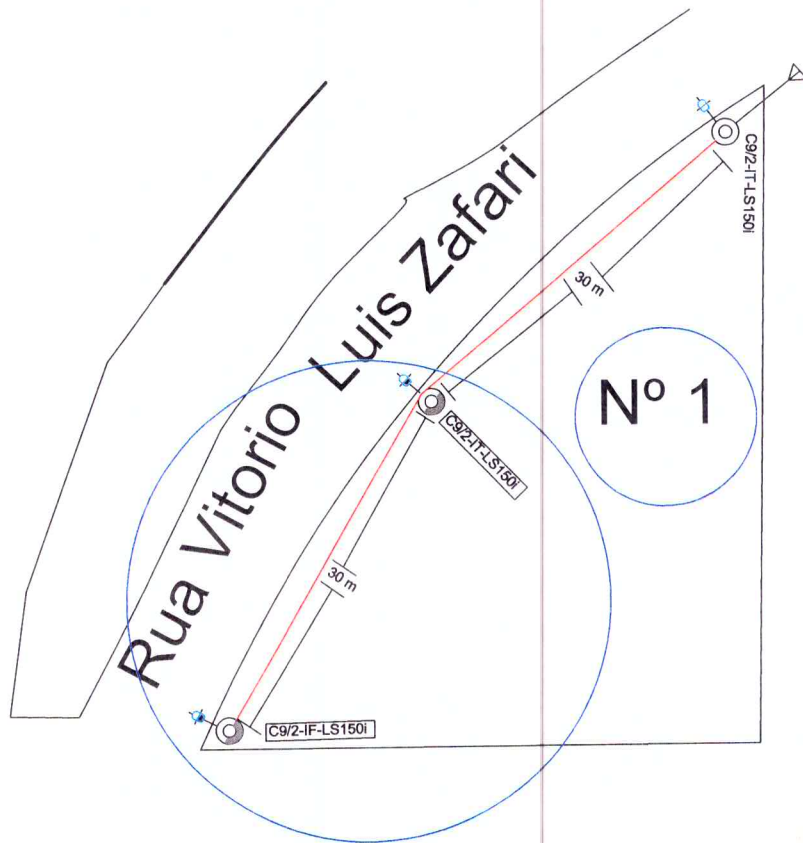


BAIRRO TRIÂNGULO

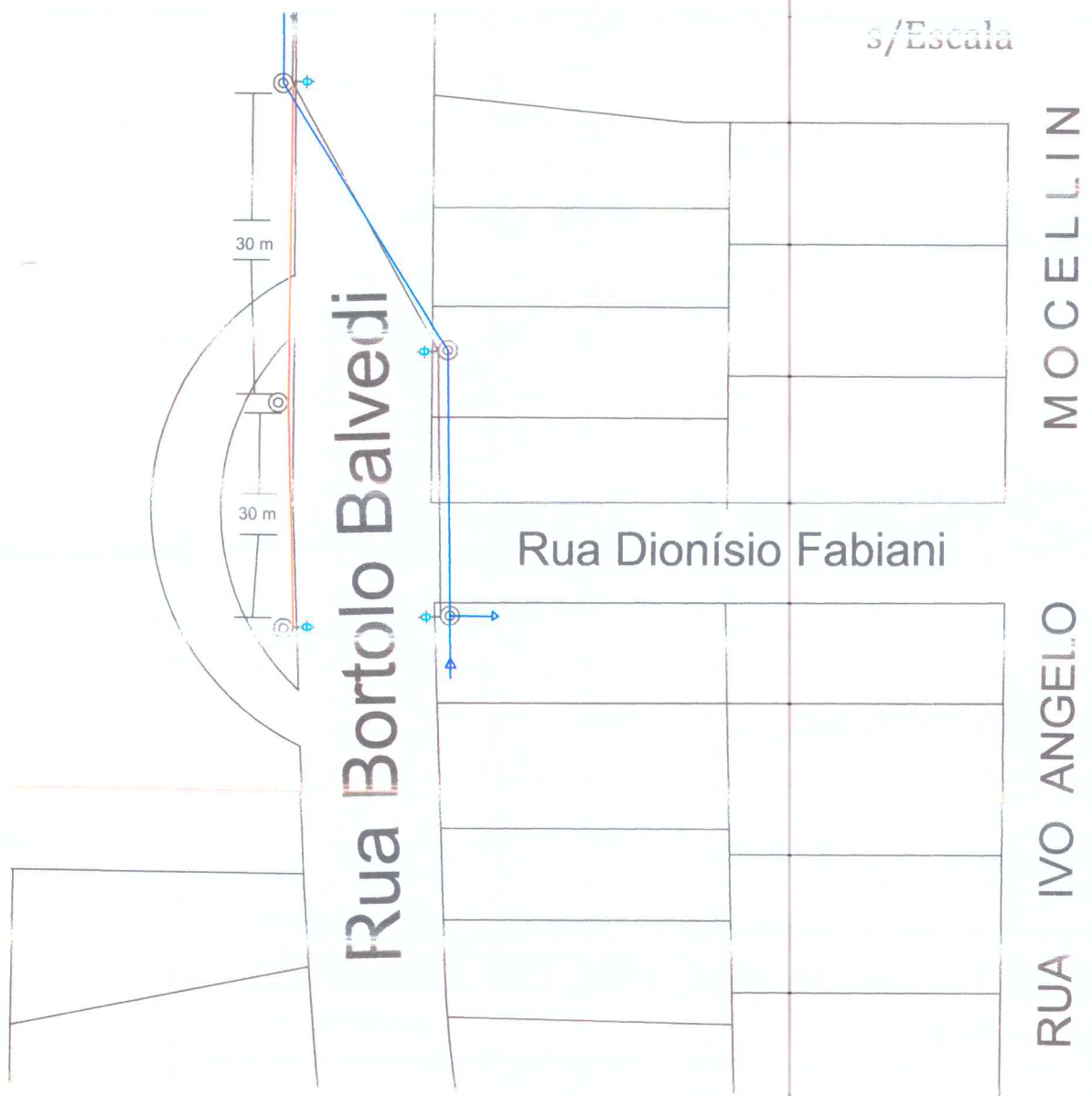


RUA ALEXANDRE GAIK

RUA ERMINIO VITOR PESSIN

SITUAÇÃO E LOCALIZAÇÃO

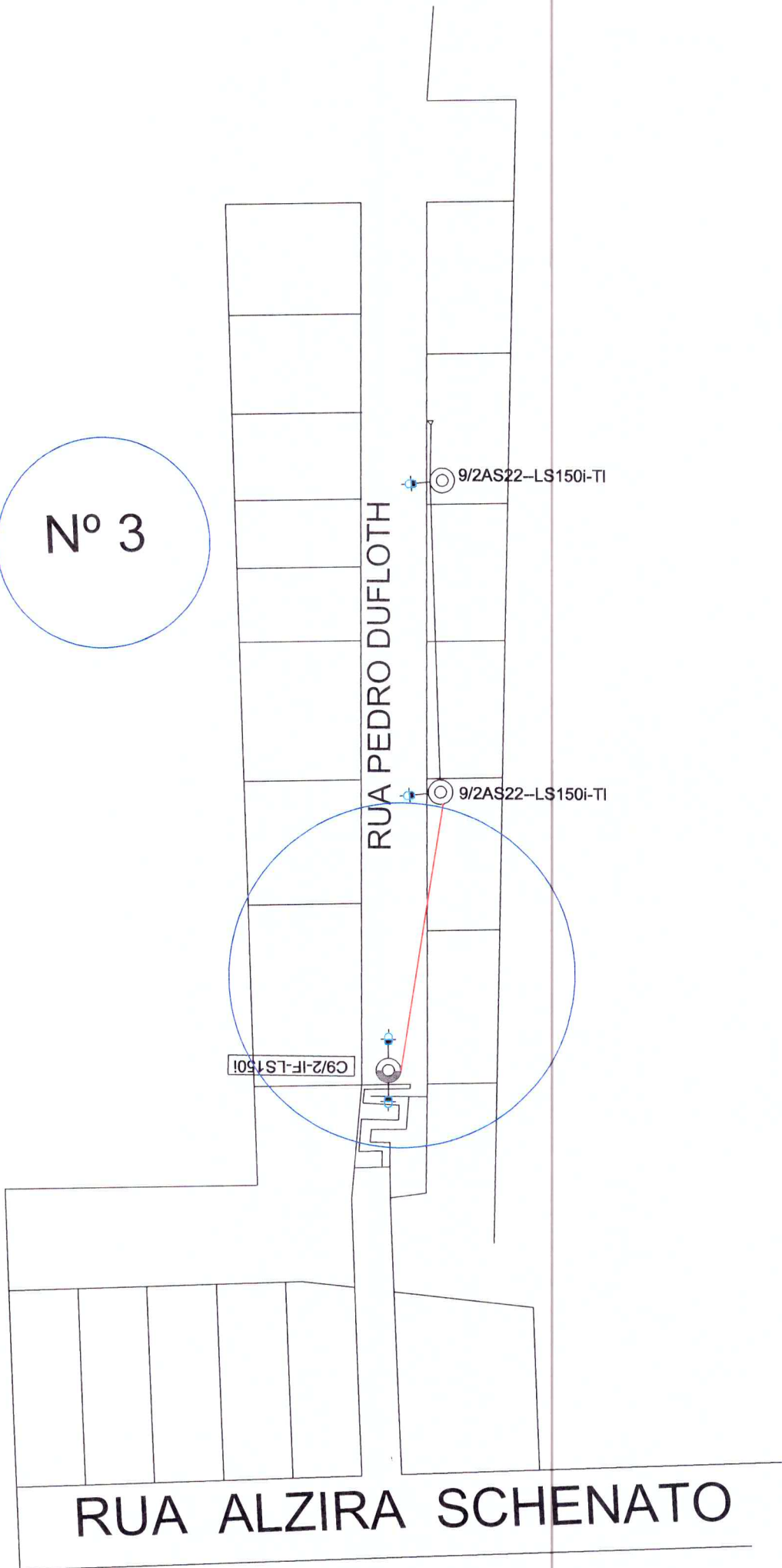
s/Escala



PLANTA CONSTRUTIVA

Escala 1:1.000

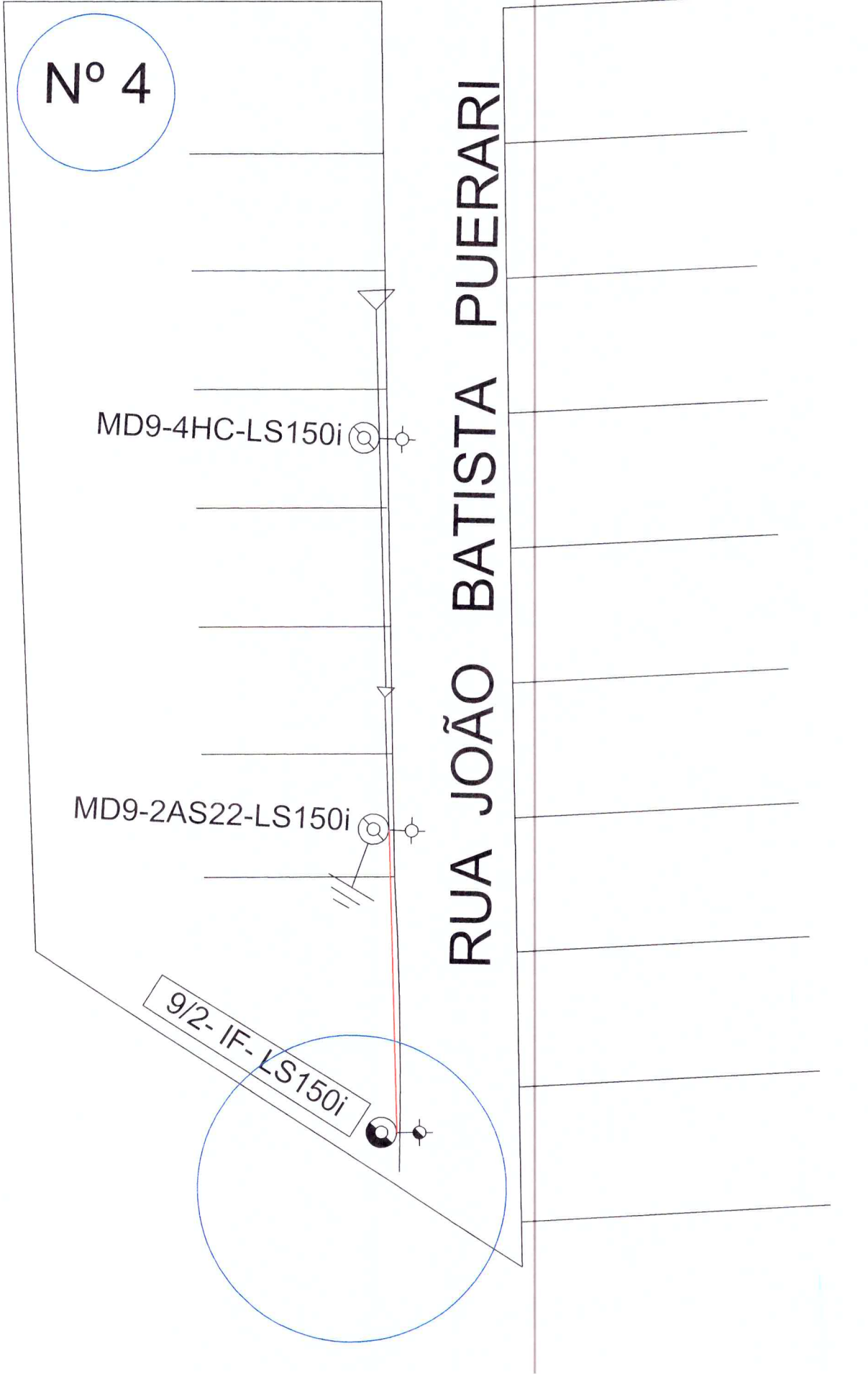
Nº 3



RUA ALZIRA SCHENATO

RUA SANTO SFREDO DOS LIRIOS

f.



3

5

1



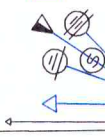
C9/2-IF-LS150i

CF 96670

13/6-N4+N4-CE3-LS150i

12/6-CE3TRM-LS150i

TR 645061

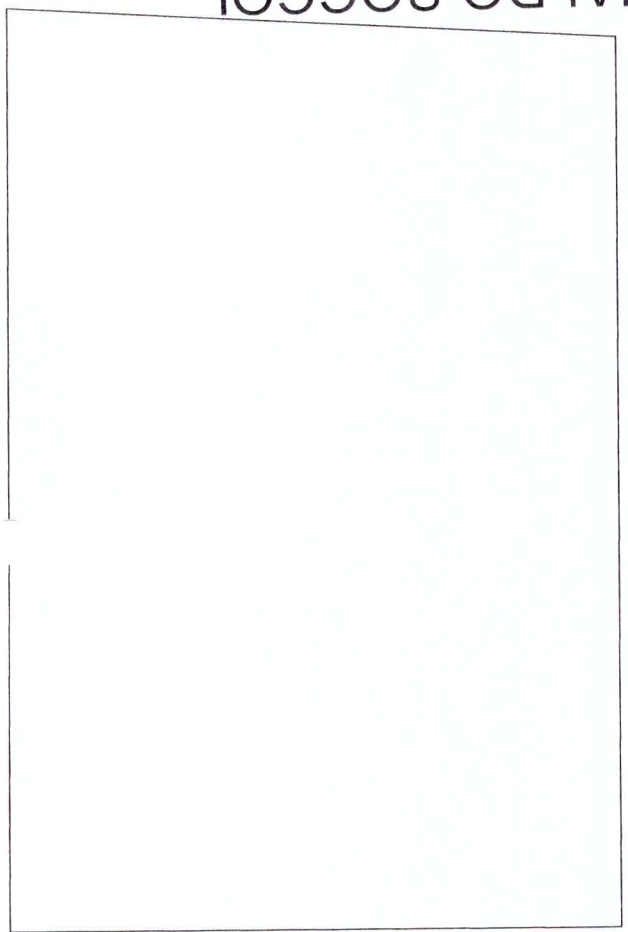
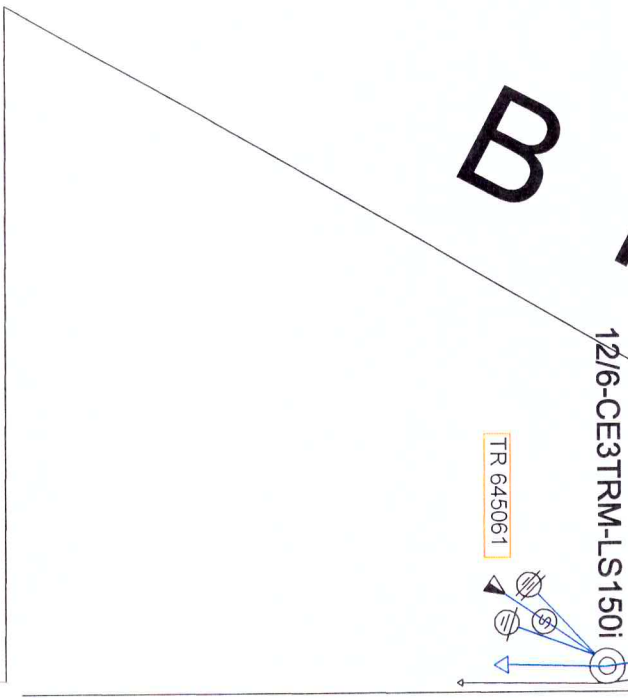


RUA REYNALDO SOCCOL

Nº 5

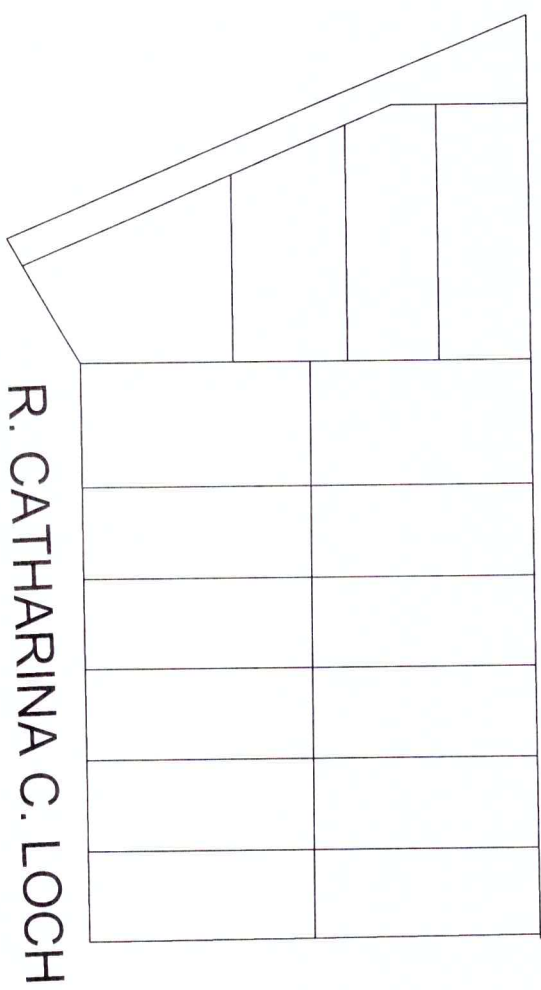
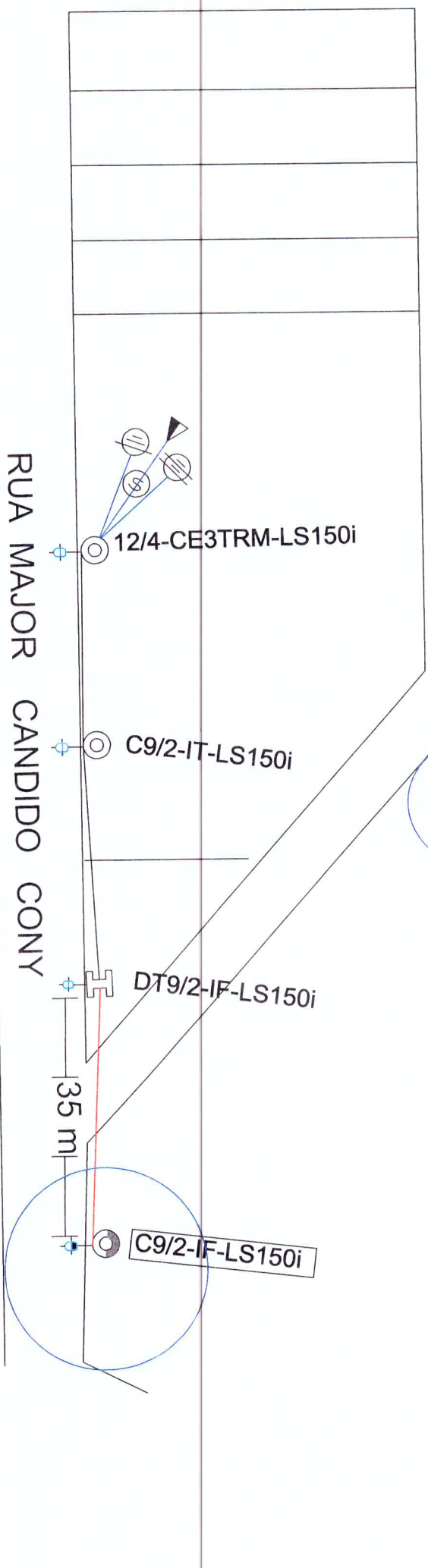
RUA ABÍLIO LOTARIO MACHRY

R
B



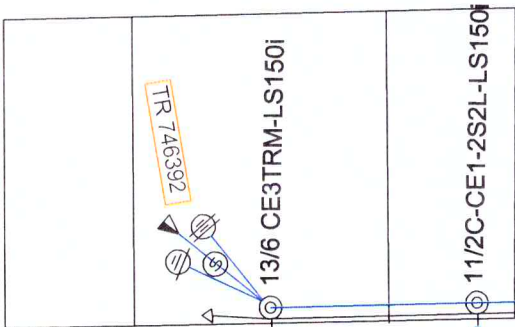
RUA ANTONIO KICH

Nº 6



R. CATHARINA C. LOCH

	Poste com luminária a ser instalado.
	Poste com luminária existente.
	Rede de baixa tensão existente.
	Rede de baixa tensão a ser instalada.



Rua

Carlos Reichmann

Rua Ernesto Galli

