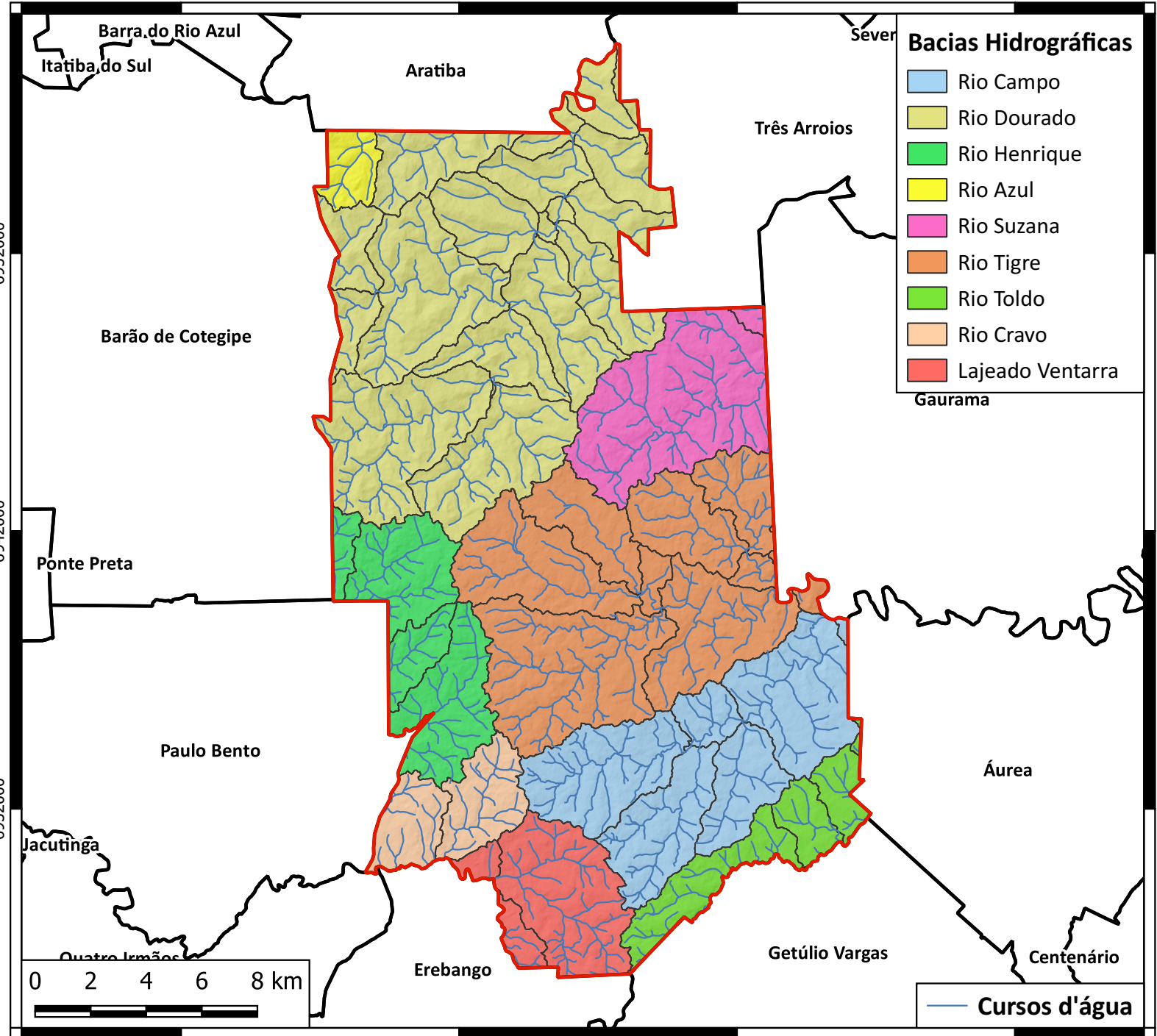


ERECHIM (RS) - BACIAS HIDROGRÁFICAS

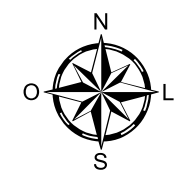
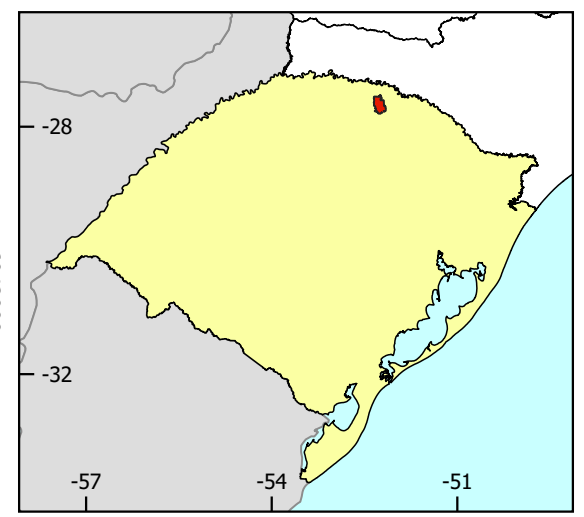
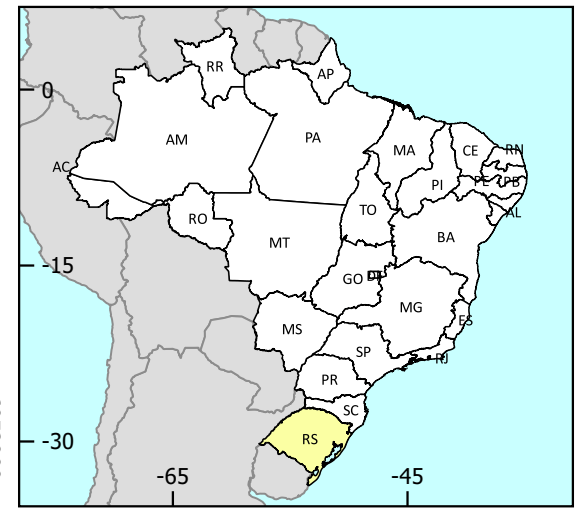
362000 372000 382000 392000



Bacias Hidrográficas

- Rio Campo
- Rio Dourado
- Rio Henrique
- Rio Azul
- Rio Suzana
- Rio Tigre
- Rio Toldo
- Rio Cravo
- Lajeado Ventarra

Gaurama



DATUM: WGS84 UTM 22J
Satélite: ALOS PALSAR
Resolução: 12,5 metros
Data: 05/03/2011



Prefeitura Municipal de Erechim
Secretaria Municipal de Meio Ambiente

362000 372000 382000 392000